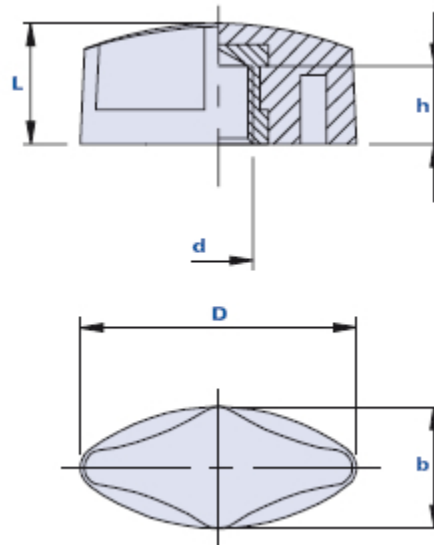


## Wing nut with blind threaded bush



Code	Description	Dimensions			Insert		Weight grams	Stock
		D	b	L	d	h		
01CSBB	CSB/32 M5	32	14	14	M5	8	8	√
01CSBC	CSB/32 M6	32	14	14	M6	8	12	√
01CSBD	CSB/32 M8	32	14	14	M8	8	16	√
01CSBCA	CSB/32 M6 RAL 2004	32	14	14	M6	8	12	√
01CSBDA	CSB/32 M8 RAL 2004	32	14	14	M8	8	16	√

### Material

Polyamide-based (PA) technopolymer. Resistant to organic and inorganic chemical substances such as oils, greases, fuels and solvents.

### Colour

Black, orange RAL 2004. Satin finish.  
Other colours for suitable quantities.

### Insert

Brass. Special inserts on design and/or in nickel-plated brass/stainless steel on request, for suitable quantities.

### Package

25 - 100 - 200 pcs.