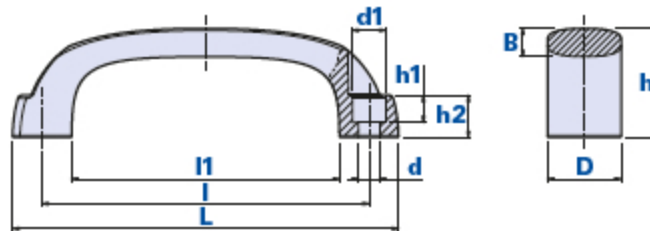


Bridge handle with built-in seat and fixing through cylindrical head screws



How to order the handle with caps:

Example: handle code 01MUTC093C with yellow caps = code 01MUTC093C-G

Black caps:	Yellow caps:	Red caps:	Green caps:	Blue caps:	Orange caps:	Gray caps:
Cod. + N	Cod. + G	Cod. + R	Cod. + V	Cod. + B	Cod. + A	Cod. + GR

The code below shows the product code without caps.

Code	Description	Dimensions							Hole			Weight grams	Stock
		L	D	h	B	l1	l	h2	d	h1	d1		
01MUTC093C	MUTC 93 D.6,5	111,2	21	38	8,8	75,7	93,5	17	6,5	11	10,7	25,8	√
01MUTC117C	MUTC 117 D.6,5	139,4	26,3	41	10,3	94,6	117	17	6,5	11	10,5	45,4	√
01MUTC117D	MUTC 117 D.8,5	139,4	26,3	41	10,3	94,6	117	17	8,5	11	13,5	44,6	√
01MUTC132D	MUTC 132 D.8,5	155,8	29,7	44	11,4	108,2	132	17	8,5	11	13,5	58,9	√
01MUTC150D	MUTC 150 D.8,5	173,8	29,7	47	11,4	126,2	150	17	8,5	11	13,5	73,2	√
01MUTC179D	MUTC 179 D.8,5	204	29,7	51	12,5	154	179	17	8,5	11	13,5	101,8	√

Material

Polyamide-based (PA) technopolymer. Resistant to organic and inorganic chemical substances such as oils, greases, fuels and solvents.

Colour

Black with satin finish.

Other colours for suitable quantities.

Assembly

With cylindrical head screws with built-in hexagon.

Caps upon request

Caps black RAL 7021, orange RAL 2004, yellow RAL 1021, red RAL 3020, green RAL 6018, blue RAL 5015 and gray RAL 7035. Satin finish. Press-fit assembly. On request, customization with other colours, logo and/or graphics, for suitable quantities.

Package

10 - 50 - 100 pcs.