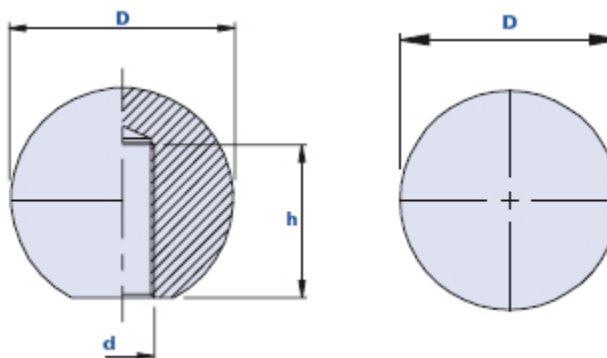


Ball knob with blind threaded hole



Code	Description	Dimensions		Hole		Weight grams	Stock
		D		d	h		
01SSF20A	SSF D.20 M4	20		M4	14	5	-
01SSF20B	SSF D.20 M5	20		M5	14	5	-
01SSF20C	SSF D.20 M6	20		M6	14	6	-
01SSF25B	SSF D.25 M5	25		M5	19	10	-
01SSF25C	SSF D.25 M6	25		M6	19	11	-
01SSF25D	SSF D.25 M8	25		M8	19	11	-
01SSF30C	SSF D.30 M6	30		M6	12	18	-
01SSF30D	SSF D.30 M8	30		M8	16	17	-
01SSF30E	SSF D.30 M10	30		M10	20	16	-
01SSF35D	SSF D.35 M8	35		M8	16	29	-
01SSF35E	SSF D.35 M10	35		M10	20	28	-
01SSF35F	SSF D.35 M12	35		M12	24	27	-
01SSF40D	SSF D.40 M8	40		M8	16	44	-
01SSF40E	SSF D.40 M10	40		M10	20	42	-
01SSF40F	SSF D.40 M12	40		M12	24	41	-
01SSF45D	SSF D.45 M8	45		M8	16	67	-
01SSF45E	SSF D.45 M10	45		M10	20	65	-
01SSF45F	SSF D.45 M12	45		M12	24	64	-
01SSF45N	SSF D.45 M14	45		M14	28	60	-

Material

Polyamide-based (PA) technopolymer.

Resistant to organic and inorganic chemical substances such as oils, greases, fuels and solvents.

Colour

Black with shiny finish. Other colours for suitable quantities.

Threading

Directly obtained from the plastic material.

Package

SSF 20/25/30/35: 50 - 100 - 200 pcs.

SSF 40/45: 25 - 50 - 100 pcs.