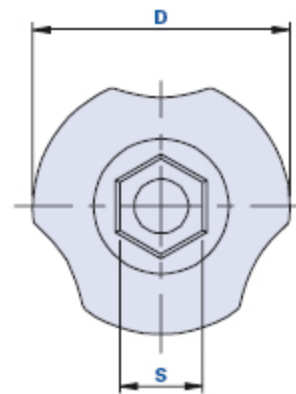
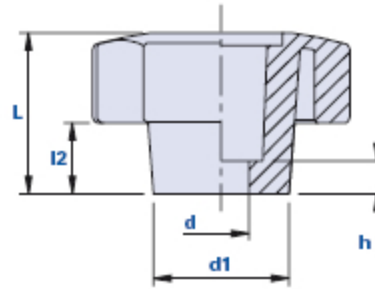


## 3-lobe knob with hexagonal seat for screws and nuts with cap



### How to order:

Example: knob code 01THE30CH10 with yellow cap = code 01THE30CH10-G

Black cap:	Yellow cap:	Red cap:	Green cap:	Blue cap:	Orange cap:
Cod. + <b>N</b>	Cod. + <b>G</b>	Cod. + <b>R</b>	Cod. + <b>V</b>	Cod. + <b>B</b>	Cod. + <b>A</b>

Code	Description	Dimensions							Weight grams	Stock
		D	L	d1	l2	h	d	s		
01THE30CH10...	THE 30 CH10	30	19	17	7	5	6,5	10	12	√
01THE40CH13...	THE 40 CH13	40	25	21	11	5	8,5	13	20	√
01THE50CH13...	THE 50 CH13	50	30	24	16	5	8,5	13	25	√
01THE60CH17...	THE 60 CH17	60	38	28	17	5	11	17	41	-
01THE80CH17...	THE 80 CH17	80	35	30	17	5	13	17	63	√
01THE80CH18...	THE 80 CH18	80	39	30	17	5	13	18	63	√

### Material

Polyamide-based (PA) technopolymer. Resistant to organic and inorganic chemical substances such as oils, greases, fuels and solvents.

### Colour

Black with satin finish.

Other colours for suitable quantities.

### Insert

Hexagonal seat for nuts and screws.

**Cap**

Cap black RAL 7021, orange RAL 2004, yellow RAL 1021, red RAL 3020, green RAL 6018, blue RAL 5015. Satin finish. Press-fit assembly, easily removable.

On request, customization with other colours, logo and/or graphics, for suitable quantities.

**Remarks**

On request, the item is delivered already assembled with the insert.

**Package**

50 - 100 - 200 pcs.