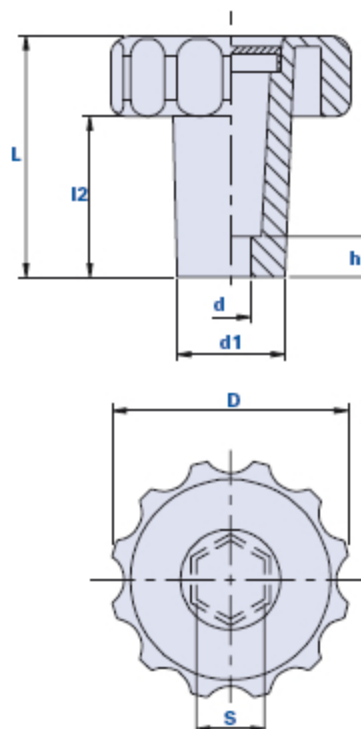


## Fluted grip knob with high hub and hexagonal seat for screws and nuts



### How to order knob with cap:

Example: knob code 01TMEA40CH17 with yellow cap = code 01TMEA40CH17-G

Black cap:	Yellow cap:	Red cap:	Green cap:	Blue cap:	Orange cap:
Cod. + <b>N</b>	Cod. + <b>G</b>	Cod. + <b>R</b>	Cod. + <b>V</b>	Cod. + <b>B</b>	Cod. + <b>A</b>

The code below shows the product code without cap.

Code	Description	Dimensions							Weight grams	Stock
		D	L	d1	l2	d	h	s		
01TMEA40CH17	TMEA 40 CH 17	40	65	22	45	10	10	17	23	✓
01TMEA60CH17	TMEA 60 CH 17	60	60	27	40	10	10	17	48	✓

### Material

Polyamide-based (PA) technopolymer. Resistant to organic and inorganic chemical substances such as oils, greases, fuels and solvents.

### Colour

Black with satin finish.  
Other colours for suitable quantities.

### Insert

Hexagonal seat.

### Cap on request

Cap black RAL 7021, orange RAL 2004, yellow RAL 1021, red RAL 3020, green RAL 6018, blue RAL 5015. Satin finish. Press-fit assembly, easily removable.

On request, customization with other colours, logo and/or graphics, for suitable quantities.

**Remarks**

On request, the item is delivered already assembled with the insert.

**Package**

50 - 100 - 200 pcs.