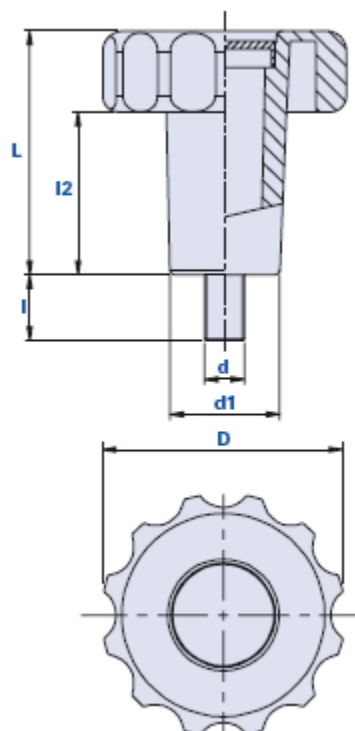


## Fluted grip knob with high hub and threaded pin



### How to order:

Example: knob code 01TMEP40E25 with yellow cap = code 01TMEP40E25-**G**

Black cap:	Yellow cap:	Red cap:	Green cap:	Blue cap:	Orange cap:
Cod. + <b>N</b>	Cod. + <b>G</b>	Cod. + <b>R</b>	Cod. + <b>V</b>	Cod. + <b>B</b>	Cod. + <b>A</b>

Code	Description	Dimensions				Insert		Weight grams	Stock
		D	L	d1	l2	d	l		
01TMEP4LD30...	TMEP 40 L=107 M8x30	40	107	19	87	M8	30	59	-
01TMEP40E25...	TMEP 40 M10x25	40	65	22	45	M10	25	49	-
01TMEP60E20...	TMEP 60 M10x20	60	60	27	40	M10	20	75	√
01TMEP60E35...	TMEP 60 M10x35	60	60	27	40	M10	35	79	√

### Material

Polyamide-based (PA) technopolymer. Resistant to organic and inorganic chemical substances such as oils, greases, fuels and solvents.

### Colour

Black with satin finish.

Other colours for suitable quantities.

### Insert

Galvanized steel. Special inserts on design and/or in brass/stainless steel on request, for suitable quantities.

### Cap

Cap black RAL 7021, orange RAL 2004, yellow RAL 1021, red RAL 3020, green RAL 6018, blue RAL 5015. Satin finish. Press-fit assembly.

On request, customization with other colours, logo and/or graphics, for suitable quantities.

**Package**

TMEP 40: minimum order quantity: 1.000 pcs., packages of 100 pcs.

TMEP 60: 50 - 100 - 200 pcs.