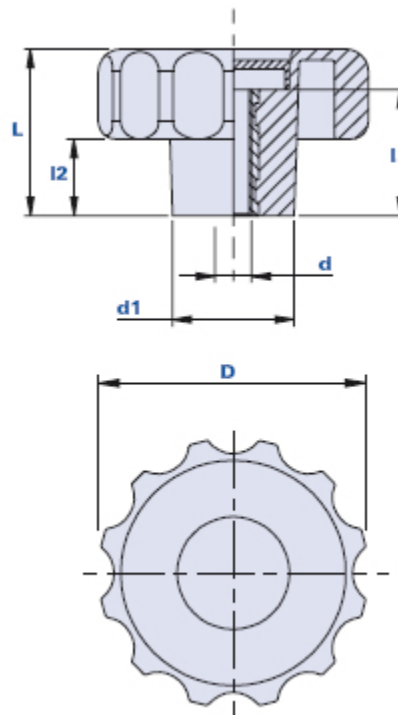


## Fluted grip knob with pass-through threaded bush



### How to order knob with cap:

Example: knob code 01TMF50D with yellow cap = code 01TMF50D-G

Black cap:	Yellow cap:	Red cap:	Green cap:	Blue cap:	Orange cap:
Cod. + N	Cod. + G	Cod. + R	Cod. + V	Cod. + B	Cod. + A

The code below shows the product code without cap.

Code	Description	Dimensions				Insert		Weight grams	Stock
		D	L	d1	l2	d	h		
01TMF40C	TMF 40 M6	40	24,5	21	10,5	M6	15	24	√
01TMF40D	TMF 40 M8	40	24,5	21	10,5	M8	15	22	√
01TMF40E	TMF 40 M10	40	24,5	21	10,5	M10	15	18	√
01TMF50D	TMF 50 M8	50	34	25	14,5	M8	16,5	36	√
01TMF50E	TMF 50 M10	50	34	25	14,5	M10	16,5	32	√
01TMF50F	TMF 50 M12	50	34	25	14,5	M12	16,5	28	√
01TMF60D	TMF 60 M8	60	37	27	17	M8	28	58	√
01TMF60E	TMF 60 M10	60	37	27	17	M10	28	64	√
01TMF60F	TMF 60 M12	60	37	27	17	M12	28	70	√

### Material

Polyamide-based (PA) technopolymer. Resistant to organic and inorganic chemical substances such as oils, greases, fuels and solvents.

### Colour

Black with satin finish.  
Other colours for suitable quantities.

**Insert**

Brass. Special inserts on design and/or in stainless steel on request for suitable quantities.

**Cap on request**

Bush-cover cap black RAL 7021, yellow RAL 1021, red RAL 3020, green RAL 6018, blue RAL 5015, orange RAL 2004. Satin finish.  
Press-fit assembly, easily removable.

On request, customization with other colours, logo and/or graphics, for suitable quantities.

**Package**

10 - 50 - 100 pcs.