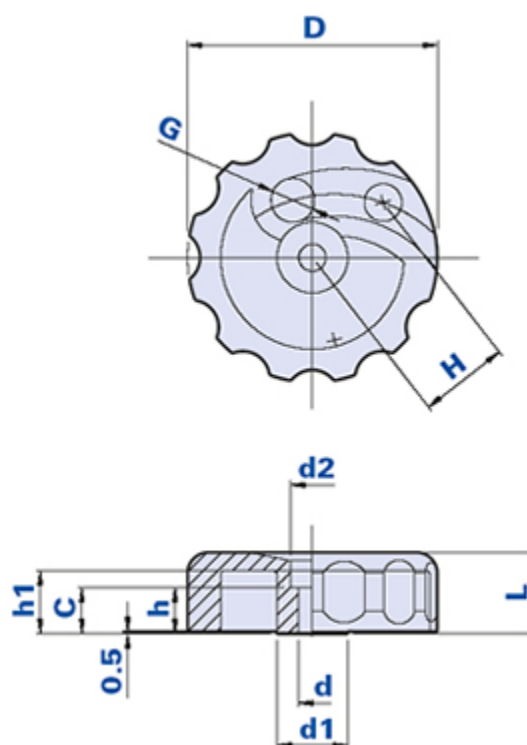


## Eccentric clamping handwheel



| Code         | Description  | Dimensions |      |      |    |    |      | Hole |    |    |    | Weight grams | Stock |
|--------------|--------------|------------|------|------|----|----|------|------|----|----|----|--------------|-------|
|              |              | D          | L    | H    | C  | d1 | d2   | d    | h  | G  | h1 |              |       |
| 1052EC600600 | 1052EC D.6,5 | 60         | 19,5 | 21,5 | 11 | 17 | 10,5 | 6,5  | 11 | 11 | 15 | 30,8         | -     |

### Material

Polyamide-based (PA) technopolymer. Resistant to organic and inorganic chemical substances such as oils, greases, fuels and solvents.

### Colour

Black.

### Assembly

With screw M6.

### Package

50 - 100 pcs.