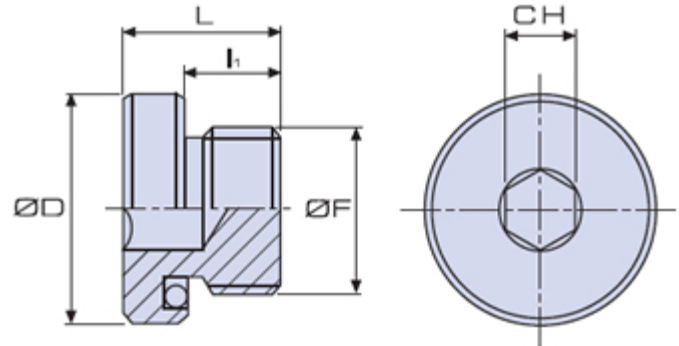


## Tapón de cabeza cilíndrica, hexágono empotrado y empaquetadura de goma

METAL



| Código       | Dimensiones |      |    |    |    | Stock |
|--------------|-------------|------|----|----|----|-------|
|              | F           | l1   | L  | D  | CH |       |
| 01TTCE-18    | G 1/8"      | 9    | 13 | 15 | 4  | -     |
| 01TTCE-14    | G 1/4"      | 11   | 6  | 9  | 6  | -     |
| 01TTCE-38    | G 3/8"      | 11   | 7  | 22 | 6  | -     |
| 01TTCE-12    | G 1/2"      | 14   | 20 | 27 | 8  | -     |
| 01TTCE-34    | G 3/4"      | 14   | 20 | 32 | 12 | -     |
| 01TTCE-1     | G 1"        | 16   | 22 | 40 | 12 | -     |
| 01TTCE-114   | G 1 1/4"    | 18   | 25 | 50 | 12 | -     |
| 01TTCE-112   | G 1 1/2"    | 17   | 24 | 55 | 24 | -     |
| 01TTCE-2     | G 2"        | 17   | 24 | 70 | 32 | -     |
| 01TTCE-10.1  | M 10x1      | 8    | 12 | 14 | 5  | -     |
| 01TTCE-12.15 | M 12x15     | 10   | 16 | 17 | 6  | -     |
| 01TTCE-14.15 | M 14x15     | 10   | 16 | 19 | 6  | -     |
| 01TTCE-16.15 | M 16x15     | 10   | 16 | 22 | 6  | -     |
| 01TTCE-18.15 | M 18x15     | 11   | 17 | 25 | 6  | -     |
| 01TTCE-20.15 | M 20x15     | 12   | 18 | 27 | 8  | -     |
| 01TTCE-22.15 | M 22x15     | 12   | 18 | 28 | 8  | -     |
| 01TTCE-26.15 | M 26x15     | 13,5 | 20 | 32 | 12 | -     |
| 01TTCE-27.2  | M 27x2      | 13,5 | 20 | 32 | 12 | -     |
| 01TTCE-33.2  | M 33x2      | 15   | 21 | 40 | 17 | -     |
| 01TTCE-42.2  | M 42x2      | 17   | 24 | 50 | 22 | -     |
| 01TTCE-48.2  | M 48x2      | 17   | 24 | 55 | 24 | -     |

### Material

Acero al plomo AVP 11SMnPb37.

**Descripción**

Tapón de cabeza cilíndrica, hexágono empotrado y empaquetadura de goma.

**Notas**

Máxima presión de trabajo 70 bar en aplicaciones estáticas.

**Envase**

TTCE-114/112/2/26.15/27.2/33.2/42.2/48.2: 25 piezas.

TTCE-34/1: 50 piezas.

TTCE-18/14/38/12/10.1/12.15/14.15/16.15/18.15/20.15/22.15: 100 piezas.